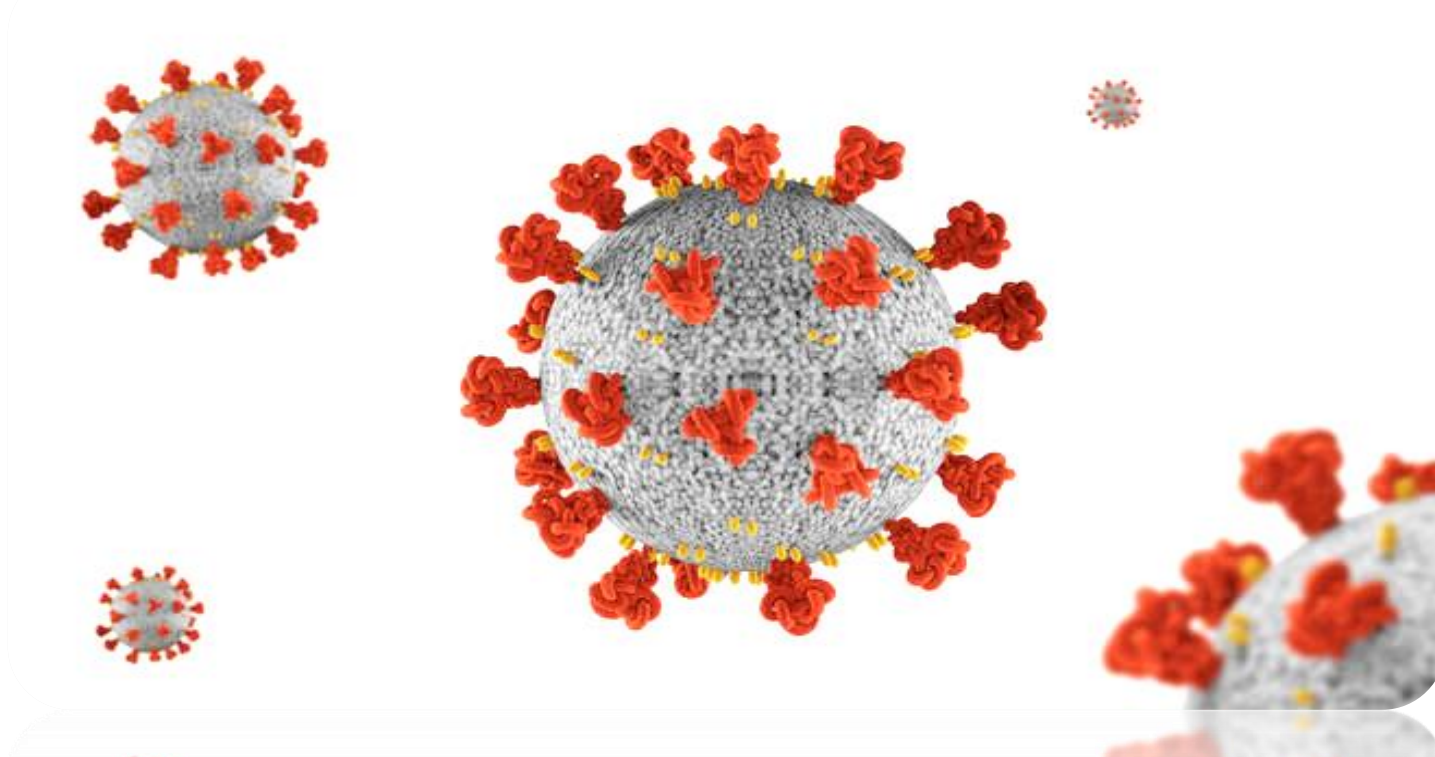
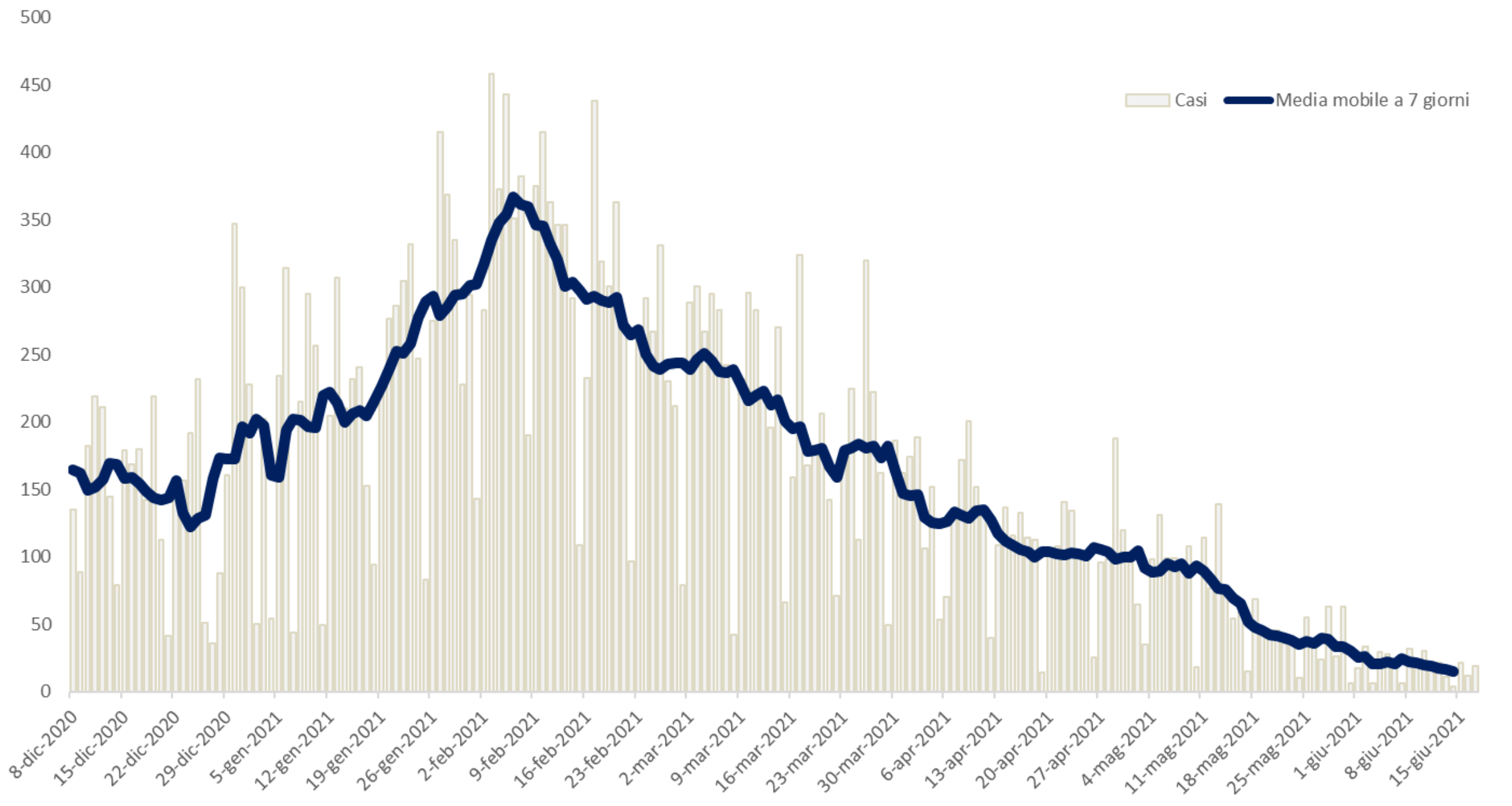


Analisi nucleo epidemiologico Sars- Cov 2 in Umbria

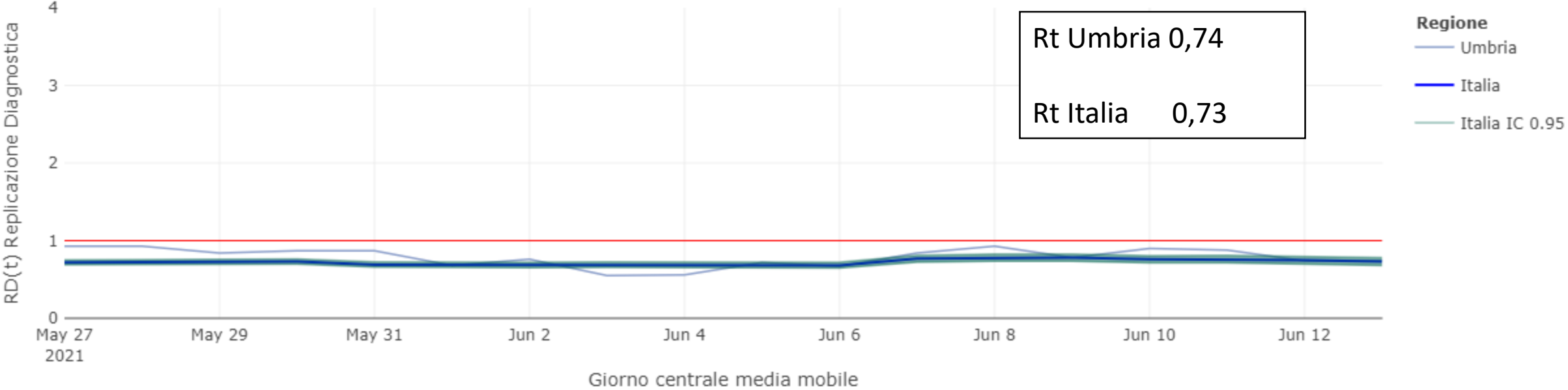


17 giugno 2021

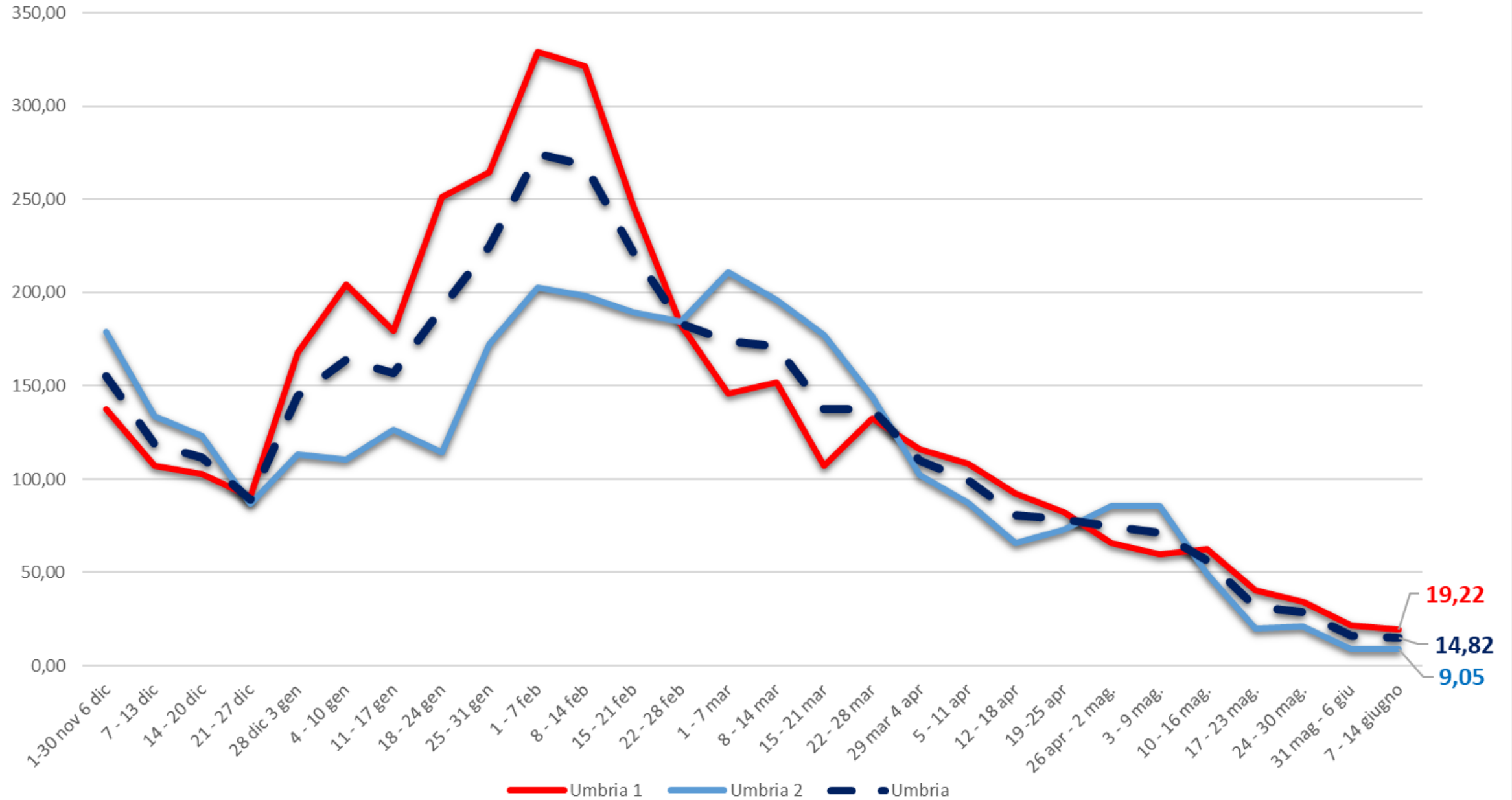
Fonte dati integrata: DB COVID – Umbria Digitale



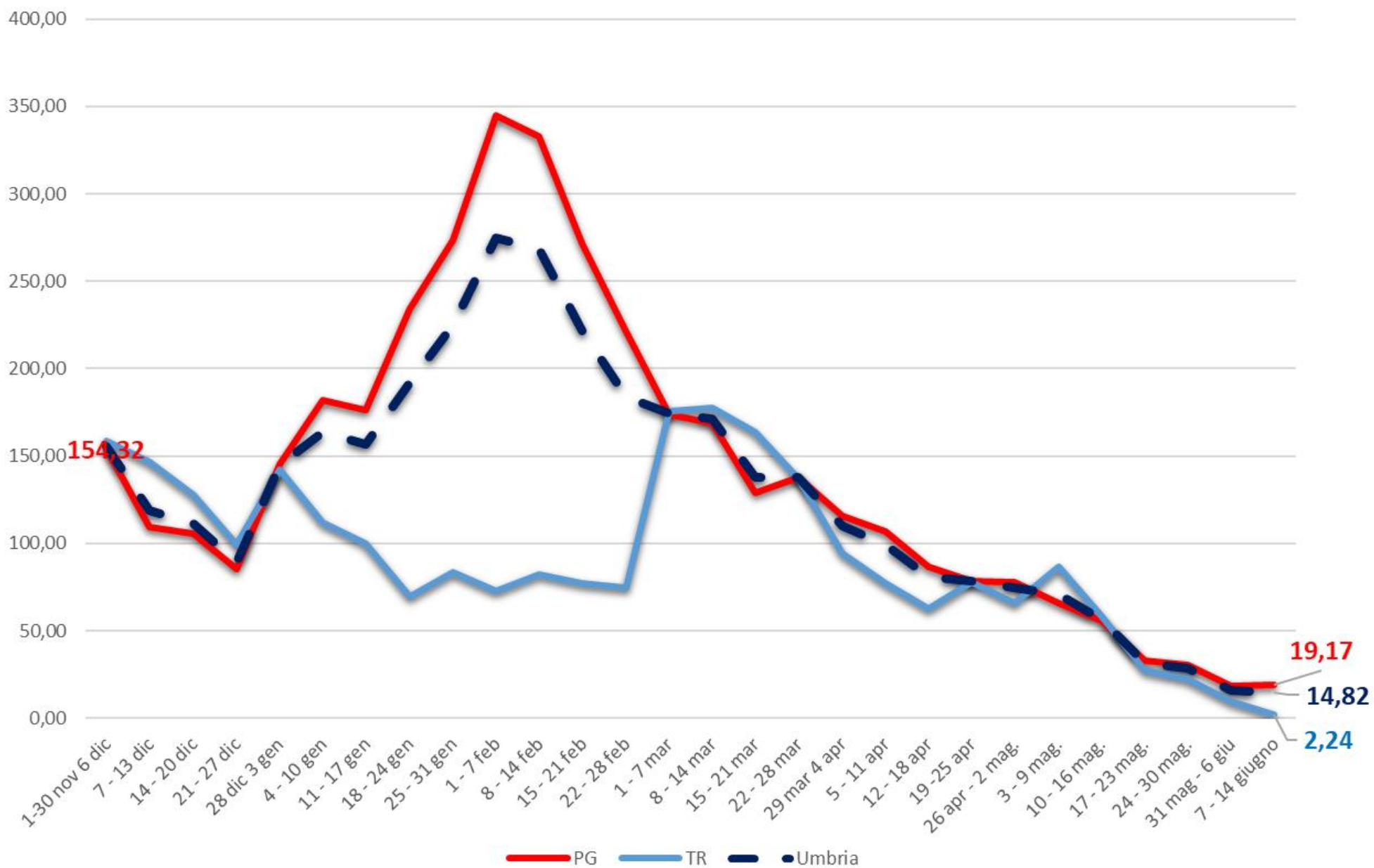
RD(t) Indice di Replicazione Diagnostica a lag 7 giorni (medie mobili a 7 giorni)



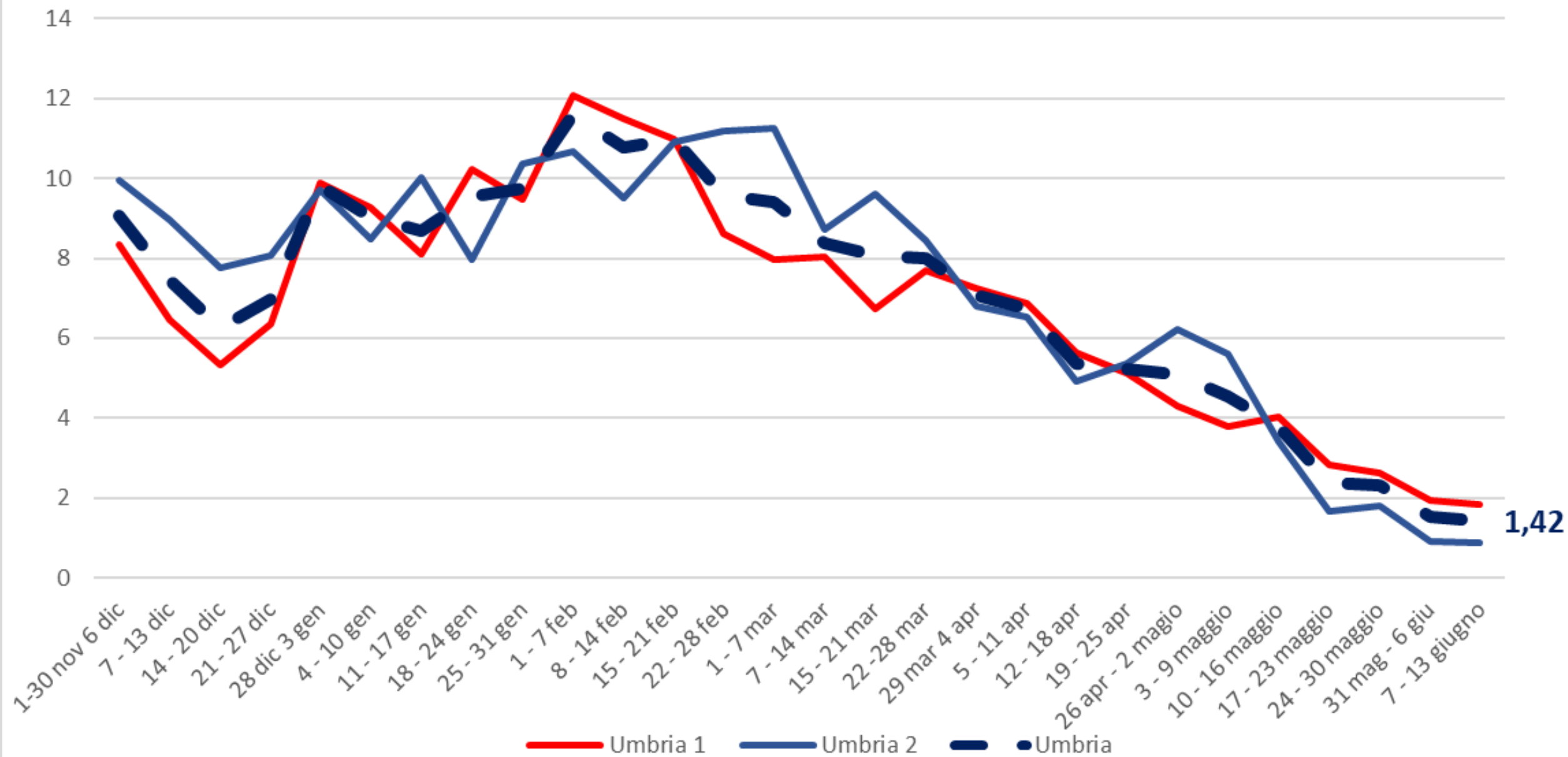
AUSL incidenza settimanale per 100.000 abitanti



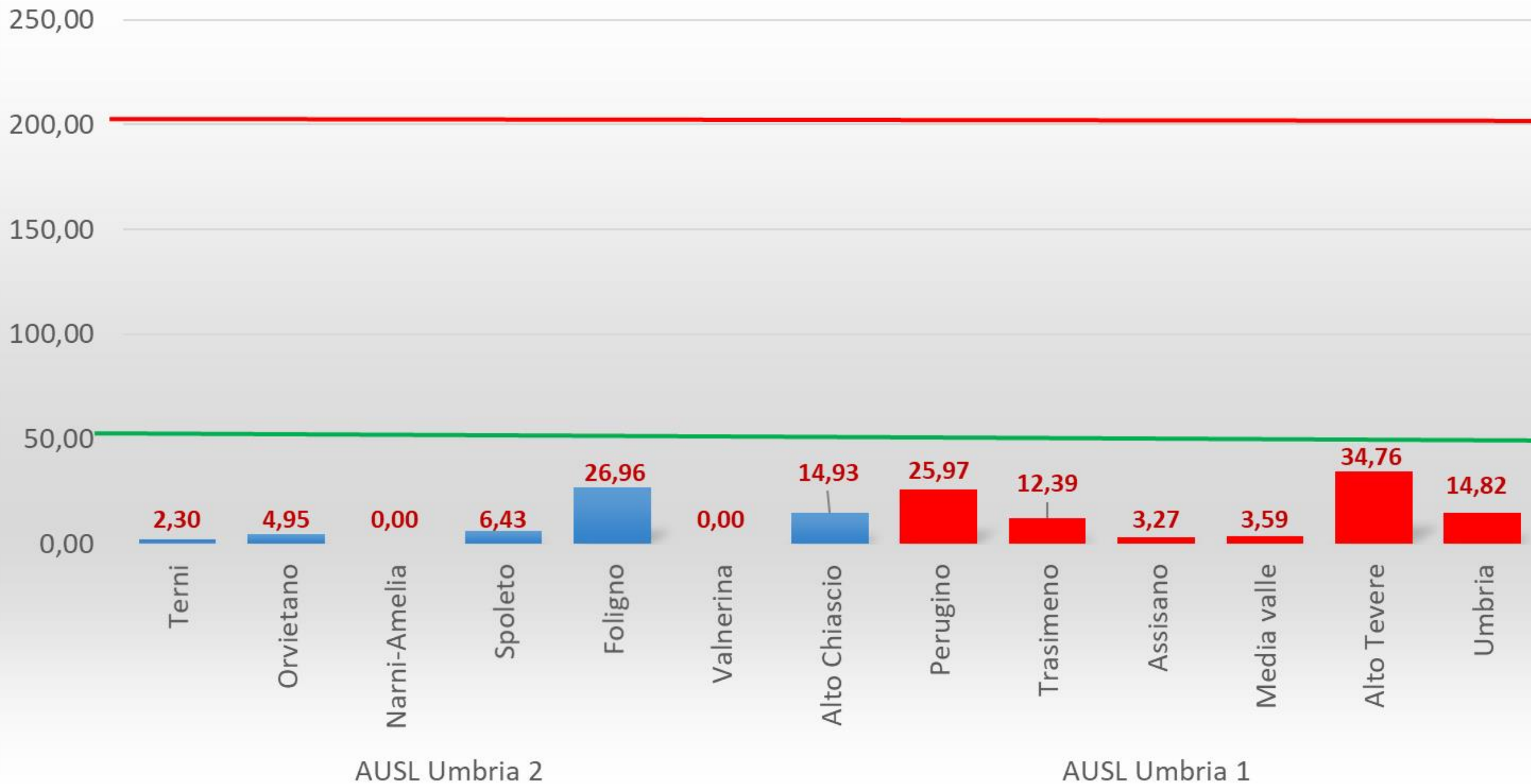
Province incidenza settimanale per 100.000 abitanti

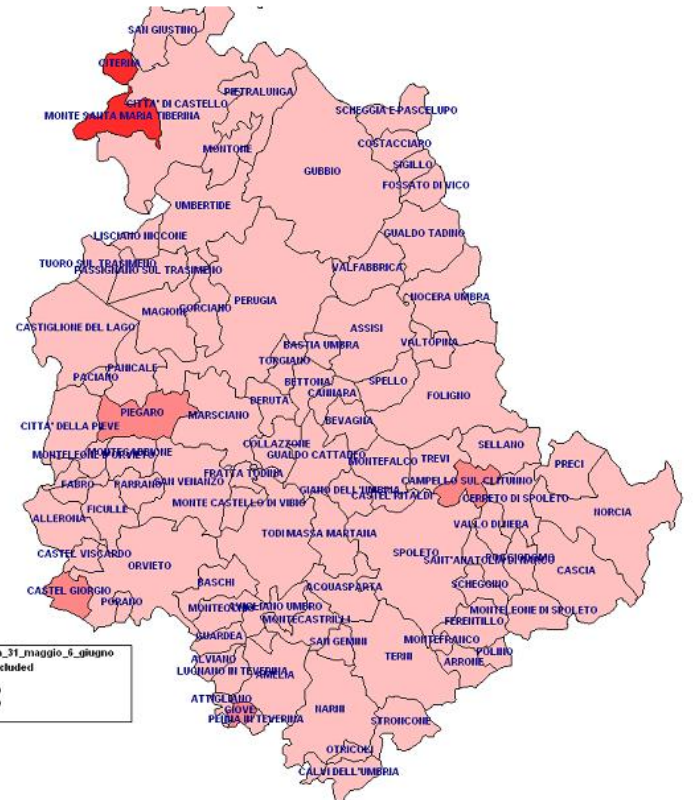
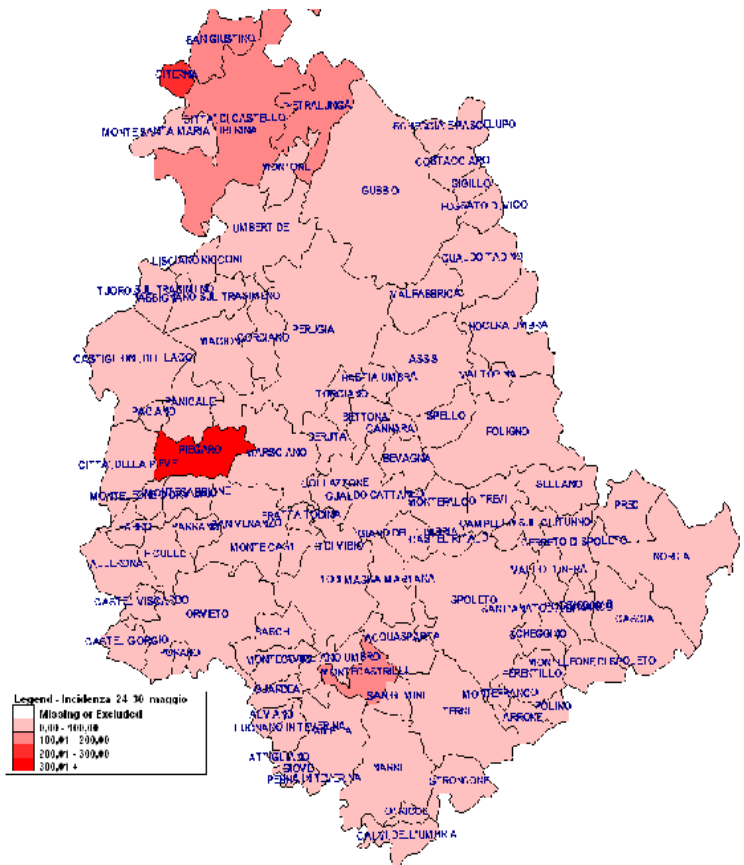


Rapporto Positivi/Tamponi per AUSL



Incidenza settimanale per 100.000 abitanti per distretto sanitario

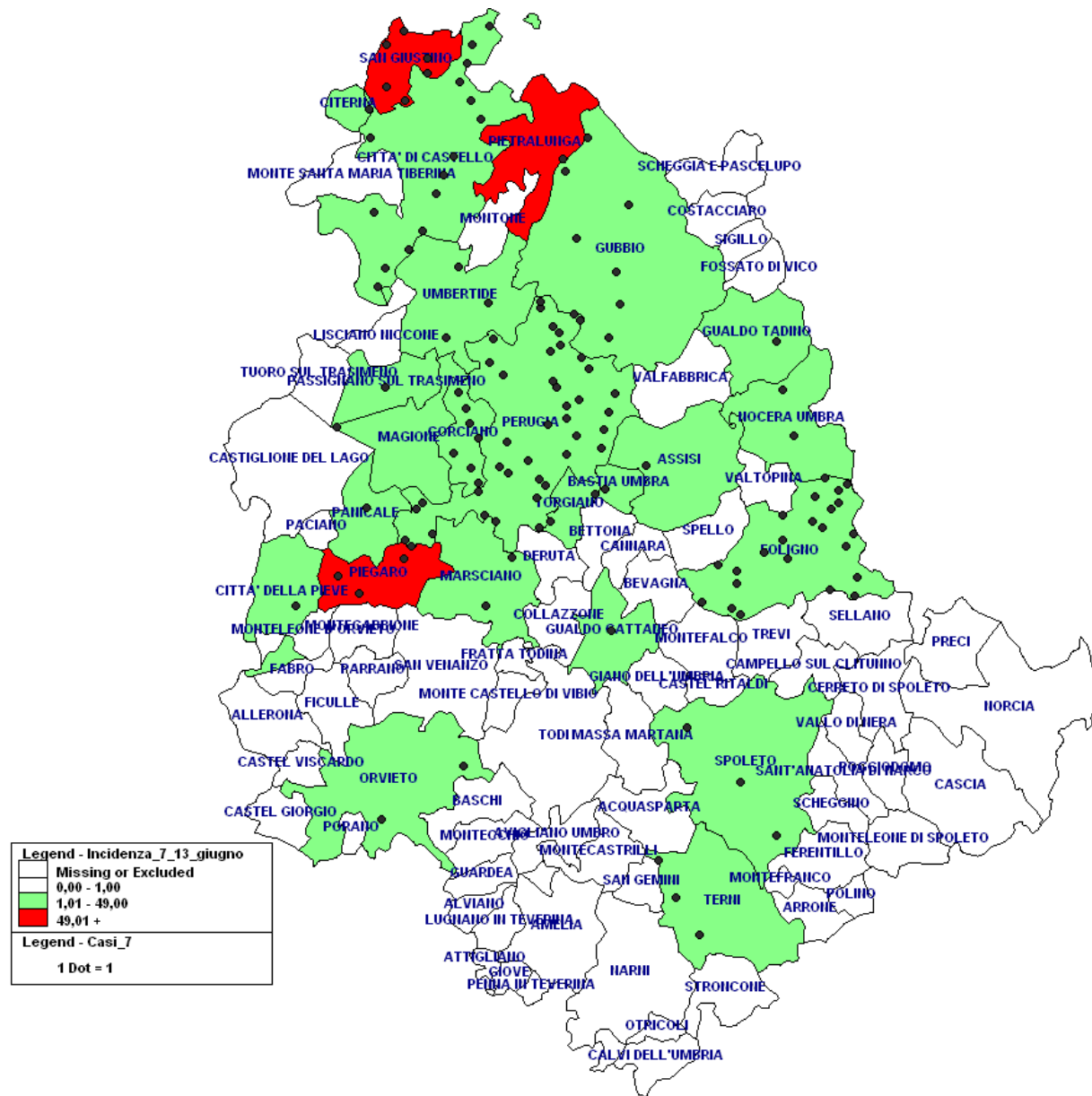




28,50

16,20

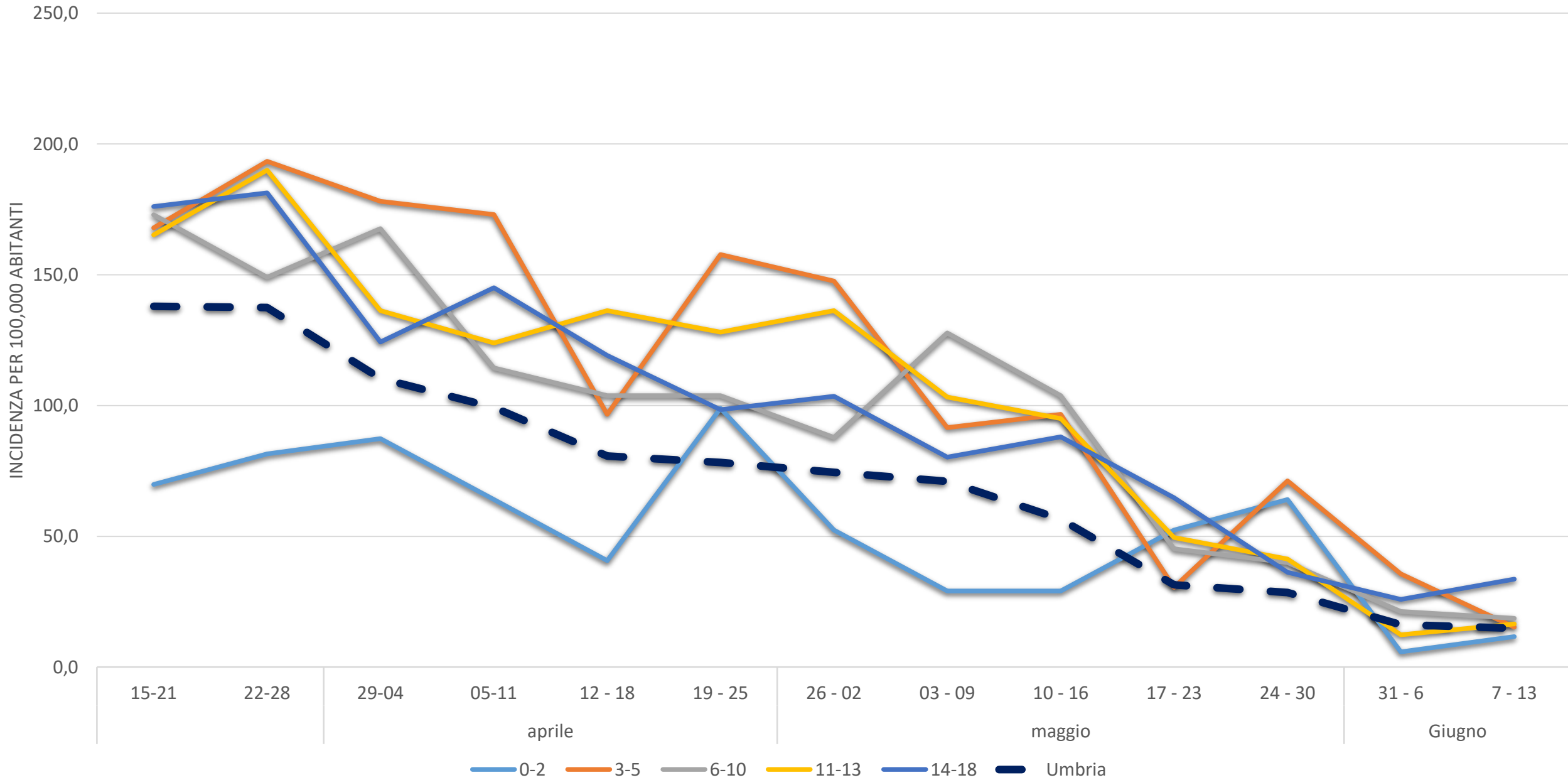
14,82



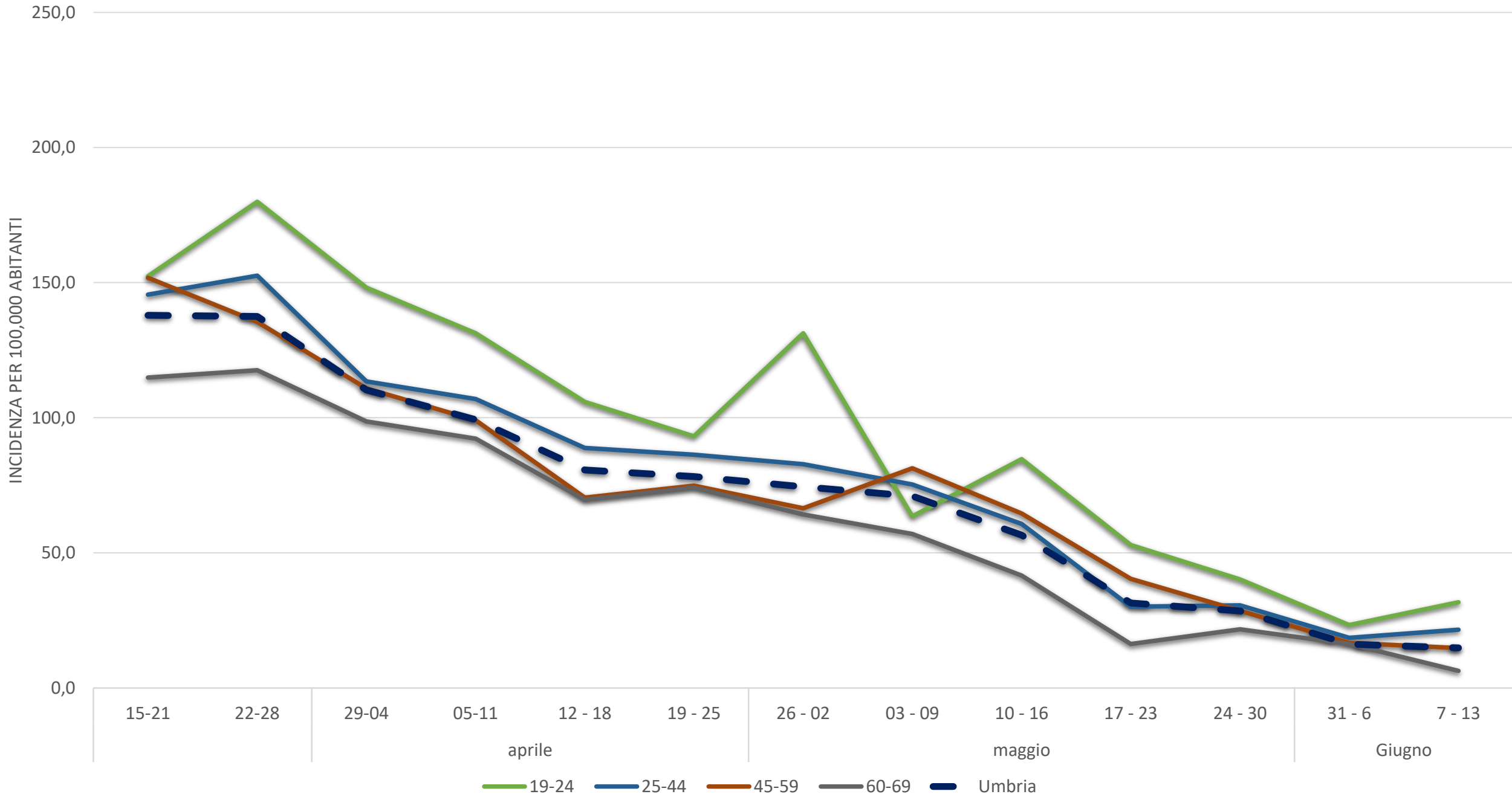
Tasso Prevalenza Positivi MM 7 (100.000 ab)



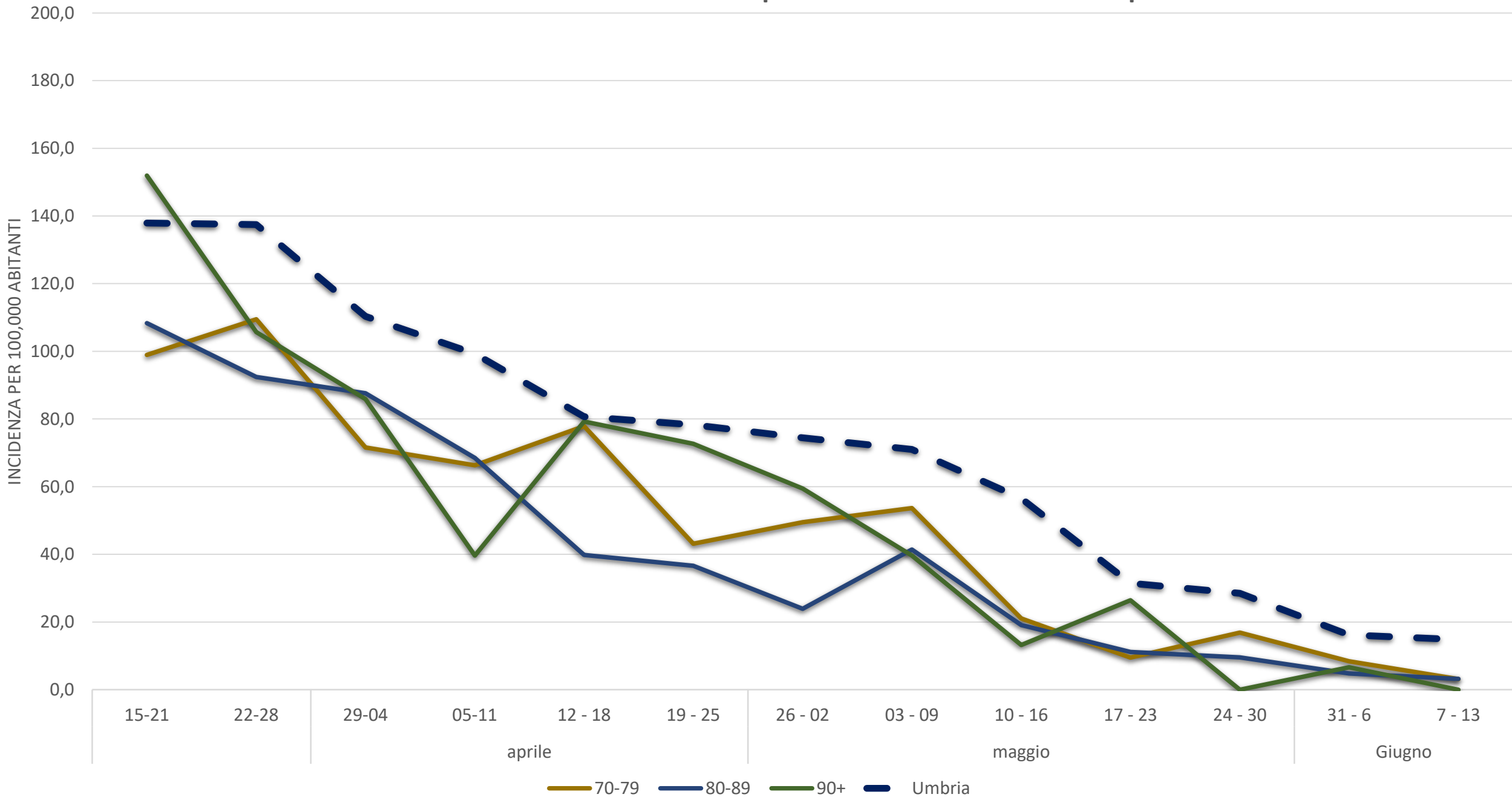
Incidenza settimanale per 100.000 abitanti 0 – 18 anni



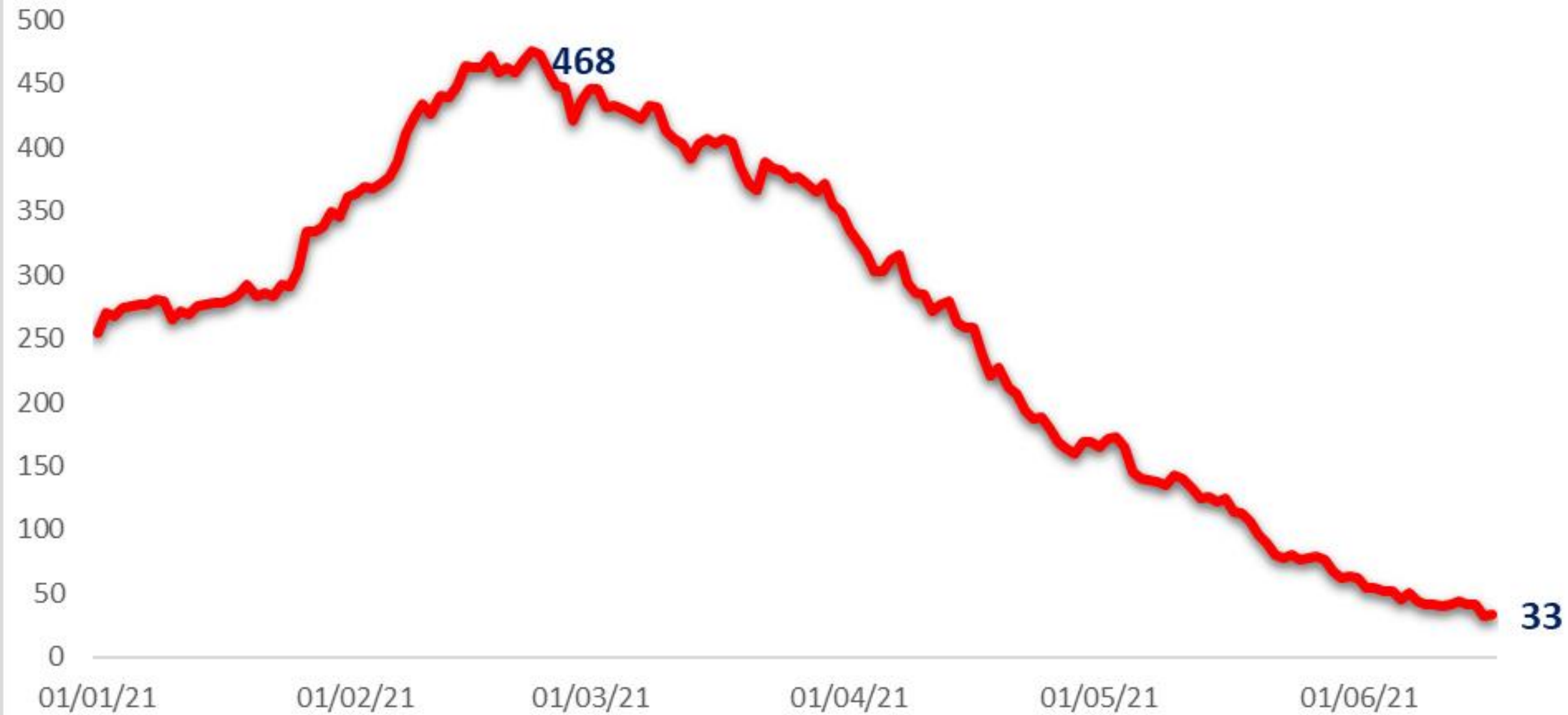
Incidenza settimanale per 100.000 abitanti 19- 69 anni



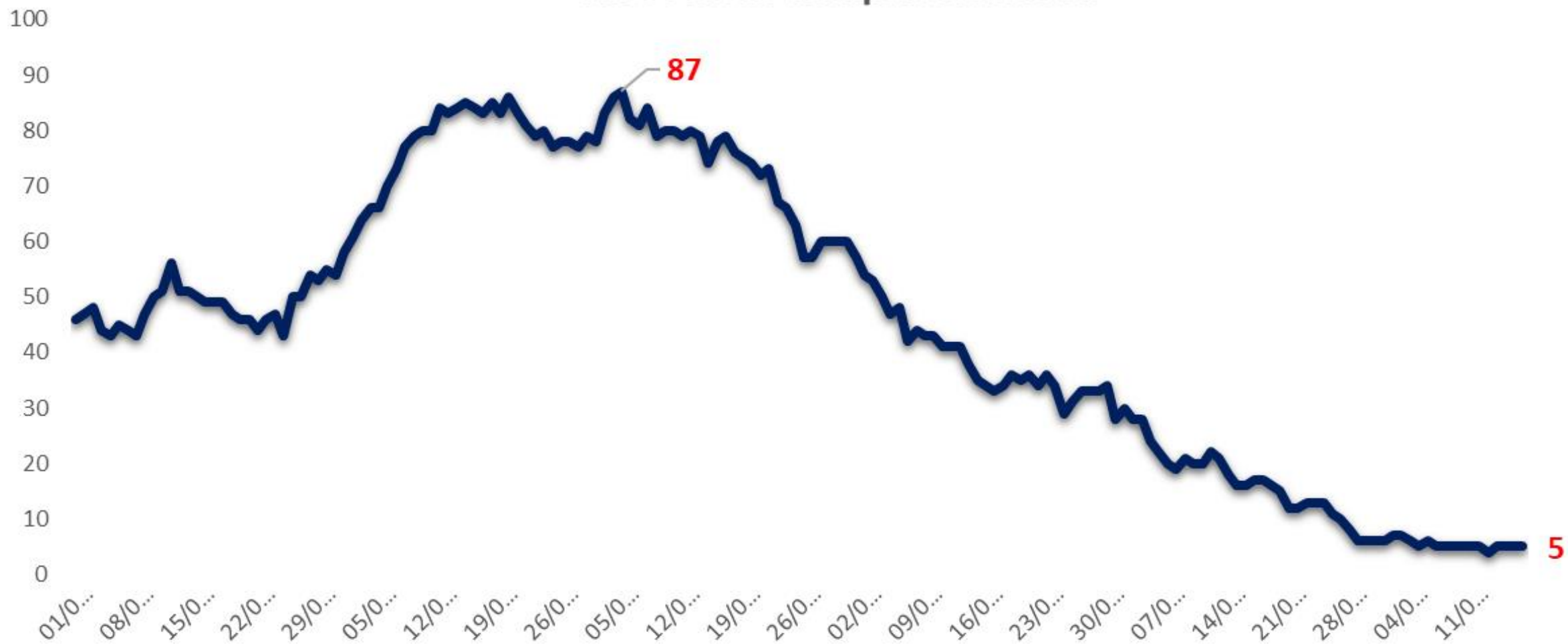
Incidenza settimanale per 100.000 abitanti 70 anni e più



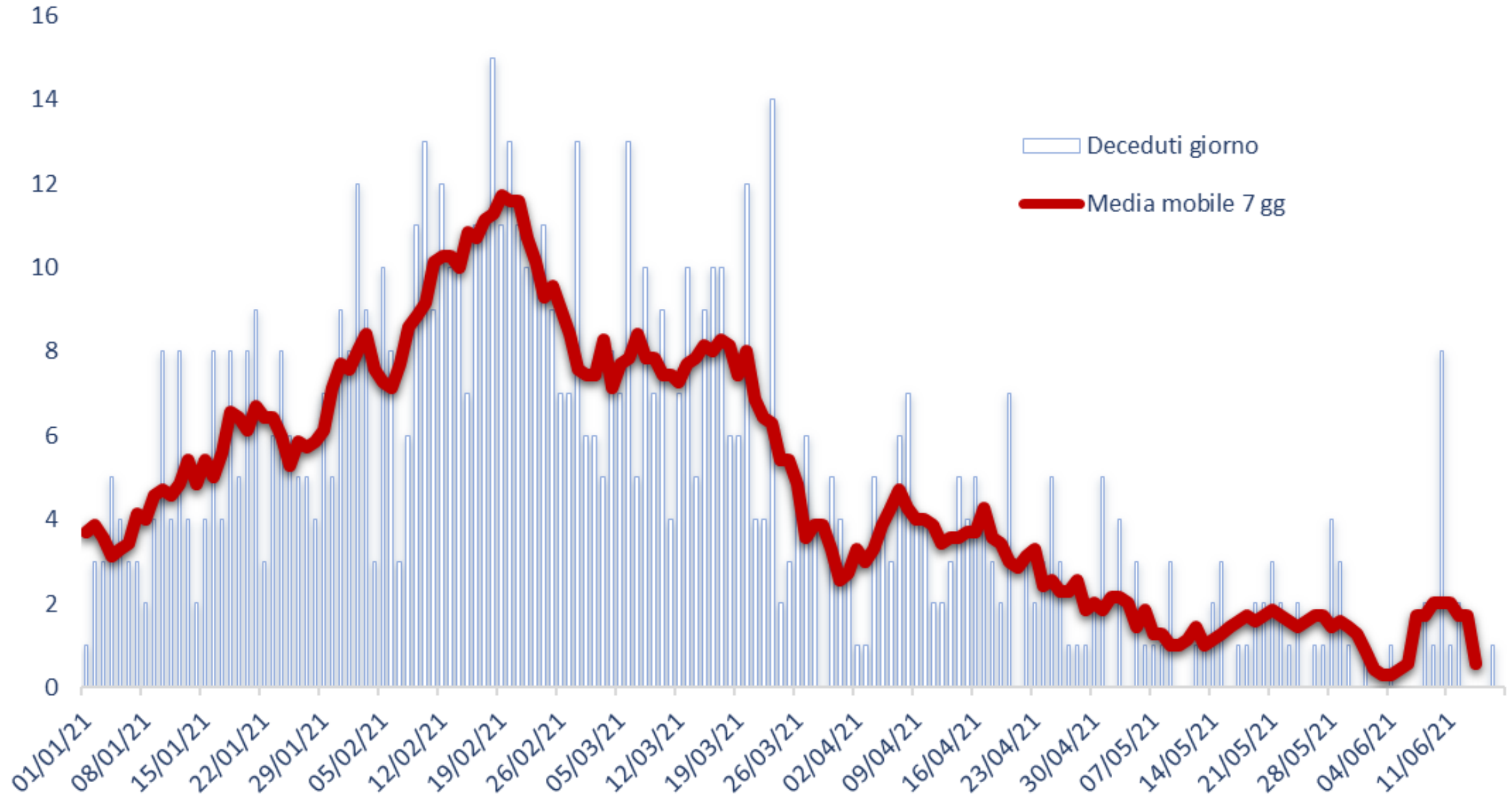
Ricoveri ordinari



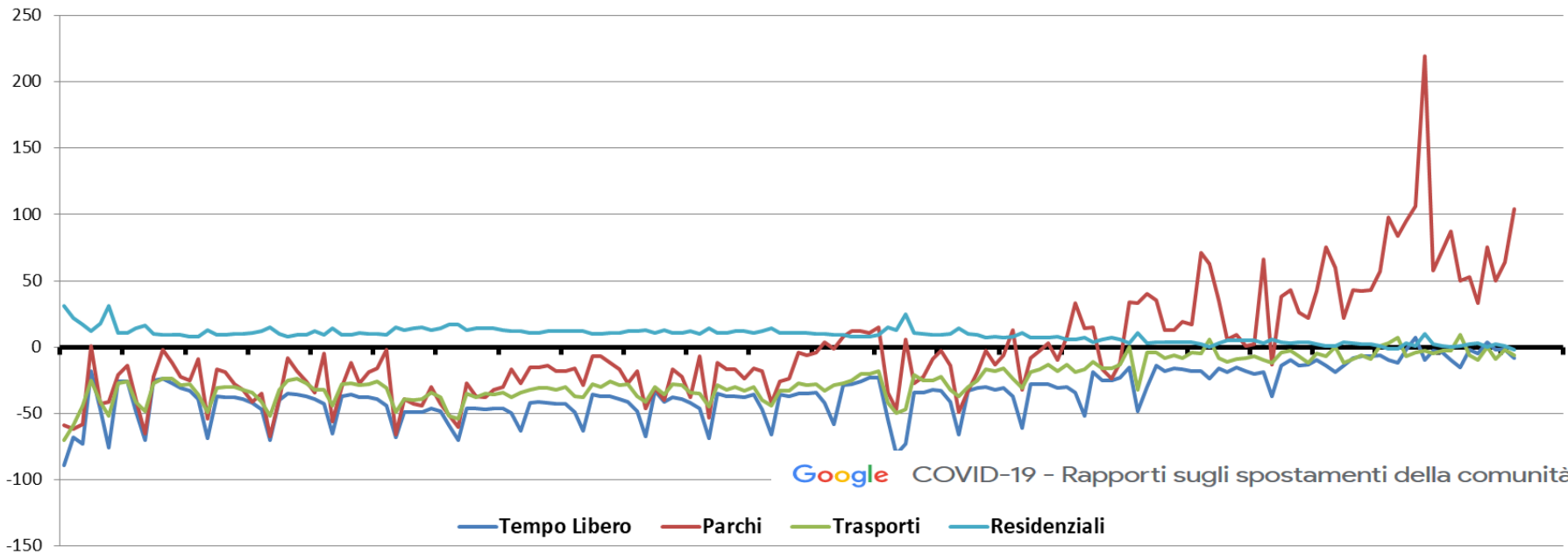
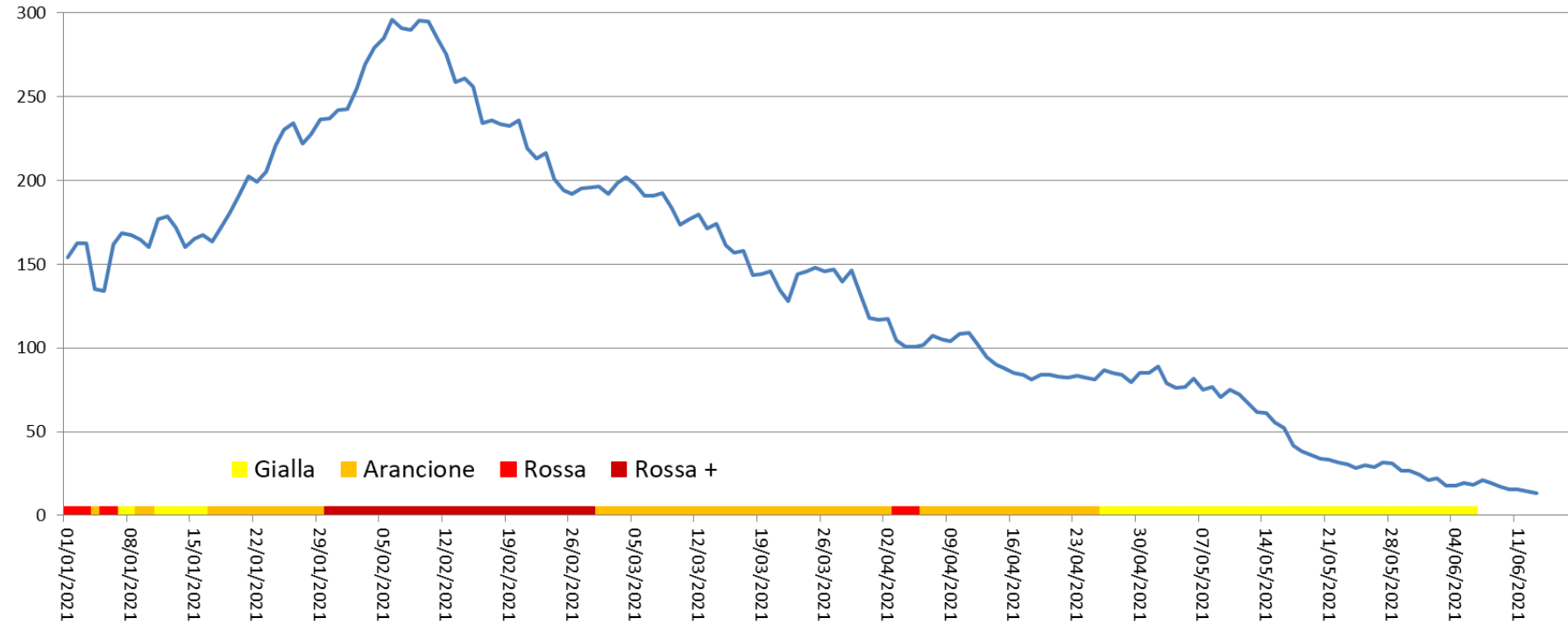
Ricoveri in terapia intensiva



Decessi



Tasso di incidenza settimanale mobile per 100.000 abitanti e mobilità - UMBRIA



Google COVID-19 - Rapporti sugli spostamenti della comunità

Tempo Libero Parchi Trasporti Residenziali

Andamento casi positivi e temperature - Umbria

